



Located at
the Mater Hospital,
Potter Building,
Annerley Rd,
South Brisbane
61- 07-31632412
qcidd@uq.edu.au



Jan—Mar 2012

Our aim is to improve the health and wellbeing of adults with a developmental disability in Queensland, through multi-disciplinary research, education and clinical practice.

QCIDD CLINIC UPDATE

Dear QCIDD supporters,

Hello and welcome to a new and exciting year with QCIDD!

I Hope everyone had a fantastic Christmas and happy New Year celebrations.

This issue of the QCIDD newsletter is full of upcoming conferences, interesting books to check out, workshops to attend, and websites for information on a wide range of facts, interviews, and general information.

There is even a survey or two to take part in. Why not help to provide valuable information on specific topics and help researchers get results!!

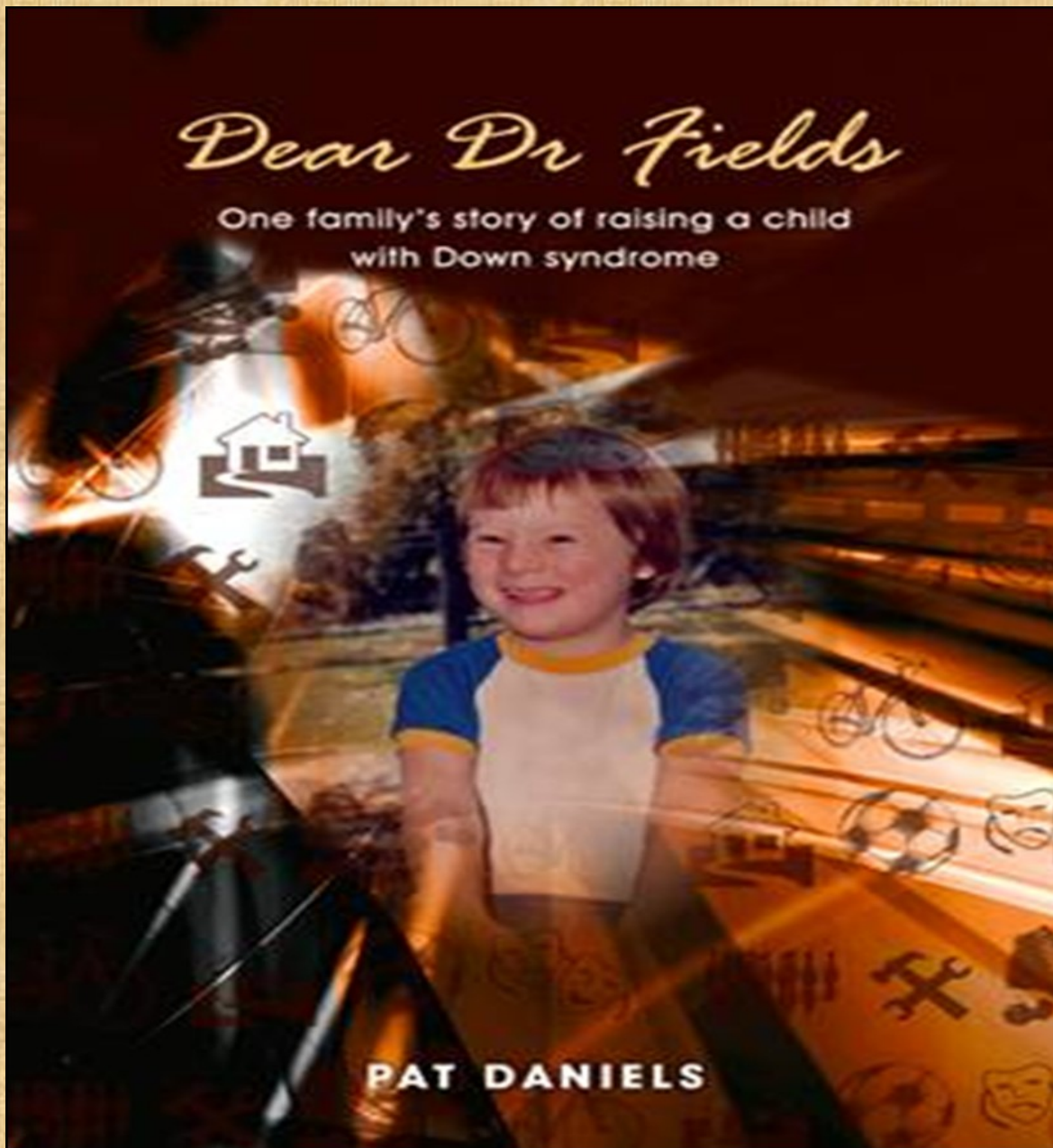
Our waiting time for the clinic is booked up to June at the moment. However our clinic is still experiencing a high demand for service.

If you have any queries about the QCIDD Clinic please phone us on (07) 3163 2524 or email j.gibson2@uq.edu.au

In this issue:

- ∞ Clinic update
- ∞ Useful Websites
- ∞ Latest Collaborations
- ∞ Up Coming events
- ∞ Books of interest
- ∞ Conferences

BOOKS OF INTEREST

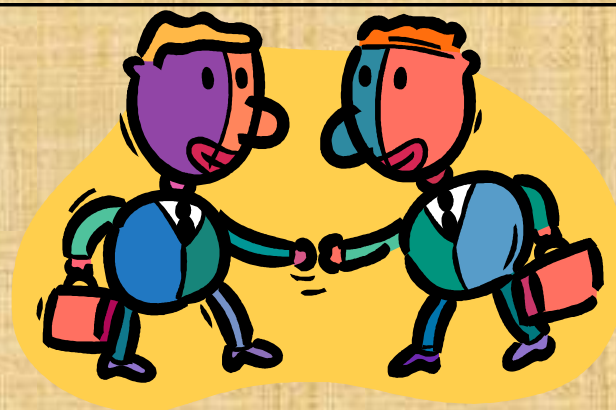


'Dear Dr Fields' is the story of a young man's life from birth through childhood to age 25 with an epilogue on the subsequent years. The book gives an insight into the life of Steven, a young man with an intellectual disability, making the best of life in an unforgiving world. It shows the challenges, successes and failures, highs and lows, joys and sorrows of the first 25 years of his life and finishes on a positive note with the move from the family home to pursue life in his own home (even if that is only one street away). The book shows Steven's juvenile tantrums, great sense of humour, teenage moodiness, ability to make friends, clear likes and dislikes, sensitivity to others, amazing abilities, contrasting inabilities, pride in achievements, stubbornness, inability to deal with disappointments, complex relationships with other family members and many other facets of his personality. The book is honest about the fact that the lives of other family members lives changed forever with Steven's birth; it also shows how those life changes made them wiser people and strengthened the family unit. This is, however, Steven's story and his triumph over the hand that life has dealt him is his alone.

<http://www.bookpal.com.au/StoreAdmin/Categories/PaperbackBlackWhiteSmallSizes/tabid/130/>

Our Latest Collaborations

- ASID
- QUT
- Endeavour Foundation
- Bachelor Oral Health
- QDN
- Uni Quest
- IDNWG (QLD Health)
- South West Brisbane Disability Network
- Relationship, Sexuality Disability Network
- Centre of excellence for behaviour support
- Ipswich City Council
- Brisbane City Council (Disability Action Plan)
- Growing Strong Forum
- Round table meeting with the Minister
- WWILD
- Open Minds
- QPPD
- FPQ
- Department of Communities SRS Team
- Health Commission QLD
- BOLD
- UQ
- MMRI
- UQ Mater Centre for Primary Health Care Intervention
- AEIOU
- CRU
- Carers QLD
- Workforce Council
- Blue Skies
- Forensic Mental Health (QLD Health)
- PANDDA



Courses / Workshops / Conferences

Family Planning: http://www.fpq.com.au/event_cal.php

SSBP: www.ssbpcconference.com

AADDM: www.aaddm2012.com

Every Australian Counts: everyaustraliancounts.com.au

Professional Association of Nurses in Developmental Disability Australia:
www.pandda.net

National Disability Services: <http://www.nds.org.au>

Just Speak Up: <http://justspeakup.com.au/>

Beyond Blue: www.beyondblue.org.au/resources



Just a reminder folks, March 2012 is in the very near future!

AADDM2012

Australian Association of Developmental Disability Medicine

March 8-10, 2012
Sydney, Australia



The Australian Association of Developmental Disability Medicine (AADDM) is pleased to announce that it will hold its 2012 Conference at the Scientia Centre, University of New South Wales in Sydney, Australia on March 8-10, 2012. The AADDM2012 conference will be an *“ideal learning opportunity for medical practitioners, policy makers, academics and government,”* according to conference convenor Associate Professor Julian Trollor. Key themes for the AADDM2012 conference are **Mental Health, Physical Health Across the Life Span and Health Services Development.**

International keynote speakers include **Professor Eric Emerson** (Lancaster University) and **Professor Tony Holland** (University of Cambridge) while national keynote speakers include **Professor Louise Baur** (University of Sydney), **Dr David Mowat** (Sydney Children's Hospital/University of New South Wales), **Ms Maria Heaton** (NSW Council for Intellectual Disability) and **Professor Greg O'Brien** (Disability Queensland/Northumbria University).

The deadline for submissions is now closed, for the submissions for Symposia, Free Papers and Posters. Early bird registration closes on December 14, 2011. For more information please go to www.aaddm2012.com or contact us at aaddm@unsw.edu.au.

Please send via email or fax your registration renewal forms to j.curtis1@uq.edu.au along with confirmation of payment.

Communicating about sexuality with people with a disability

Family Planning Queensland (FPQ) presents a professional development opportunity for all service providers who support clients with a disability.

This interactive workshop will explore strategies and resources to assist workers to communicate positively with their clients about sexuality and relationships.

This course is suitable for:

- Disability support workers
- Supported accommodation workers
- Health professionals
- Tertiary students
- Other professionals working with people with disabilities

Topics covered will include:

- Developing a rationale for communicating about sexuality
- Creating a safe and positive environment
- Answering questions from clients about sexuality with confidence
- Planning and delivering sexuality information for people with disabilities

This course is being held in multiple locations.

DATES

Locations	CRESTMEAD	WELLINGTON POINT	FORTITUDE VALLEY
Dates	6 th March 2012	13 th March 2012	24 th April 2012

ALL COURSES

Time	9.00am to 3.00pm
RSVP	14 days prior to course date
Cost	\$90
Refreshments	Morning Tea and Lunch

Limited places available

To register, please fill in the attached registration form and fax to 07 3250 0294

For more information contact Rachel Hanrick

Ph: 3250 0240

Email: info@fpq.com.au

Sexual health checks and adults with intellectual disability

» Do you work with young people or adults with an intellectual disability?

Family Planning Queensland (FPQ) presents a professional development opportunity for all service providers who work in this sector.

This interactive workshop will explore strategies and resources to assist workers to communicate positively about sexuality and sexual health.

This course is suitable for:

- Support workers
- Residential care workers
- Health professionals
- Allied health professionals
- Tertiary students
- Case managers

Topics covered will include:

- Identify sexuality issues for people with intellectual disability
- Strategies for supporting access to information and education about sexual health
- Planning aspects and resources to support sexual health checks

This course is being held in multiple locations.

DATES

Locations	BRISBANE WEST	FORTITUDE VALLEY	CABOOLTURE
Dates	21 st March 2012	12 th April 2012	4 th May 2012

ALL COURSES

Time	9:00am – 3:00pm
RSVP	14 days prior to course date
Cost	\$90
Refreshments	morning tea and lunch provided

Limited places available

To register, please fill in the attached registration form and fax to 07 3250 0294

For more information contact Rachel Hanrick

Ph: 3250 0240

Email: info@fpq.com.au

Course code RHA

Up Coming Events



are YOU ready?

NDS NSW ANNUAL STATE CONFERENCE
Hilton – Sydney • 13-14 February 2012

For more information call Katherine McLellan, Email: katherine.mclellan@nds.org.au, Phone: 02 9256 3137, GPO Box 2687, Sydney NSW 2000

Disability Communities of Practice

“Communities of practice are groups of people who share a concern or a passion for something they do and learn how to do it better as they interact regularly” Sessions :16 Feb, 1st Mar, 29th Mar 2012. For more information and registrations email

registrations@workforce.org.au or call 1800 112 585

Pacific Rim International Conference on Disability and Diversity

The deadline for the 2012 Pacific Rim International Conference Call for Proposals is right around the corner! We invite you to share your experience and knowledge with hundreds of people who are passionate and committed to building a world where all can live to their complete potential. Proposals for topical and breakout presentations, workshops, poster sessions, symposia and other formal sessions will be considered for inclusion in the program if submissions are received by December 16, 2011.

Where: Honolulu, HI: Hawai'i Convention Centre When: March 26, 27th 2012

For more information and registration for the Pacific Rim International Conference on Disability and Diversity, special events, workshops, pre- and post-conferences go to <http://www.pacrim.hawaii.edu> or email cccrocke@hawaii.edu.

Communicating about sexuality with people with a disability will be held on the 6th March (Crestmead), 13th March (Wellington Point), 24th April (Fortitude Valley).

Sexual health checks and adults with intellectual disability will be held on the 21st March (Brisbane West), 12th April (Fortitude Valley), 4th May (Caboolture).

These are full day workshops (9am-3pm) with strategies to assist service providers to learn more about communicating and teaching about sexuality, with ideas to use in their workplace.

Contact Rachel Hanrick or visit web site http://www.fpq.com.au/event_cal.php for more information.

Street by Street

Recovering the practice, and art, of neighborliness, **Street by Street** is a national neighborhood support program that links people who live in the same street or nearby. The focus is on practical helping tasks such as taking the bin in and out, hanging washing, getting a few items from the shops, or getting mail from the letter box. <http://www.civilsociety.org.au/StreetbyStreet.htm>

Save the date- "Parents with learning difficulties action planning forum"

Please mark Wednesday February 29th (Happy Leap Year) 9:30-12:00 noon in your diaries for the next phase of our conversation. Nadine Lepre, Senior Community Support Officer, Lifelong Planning Community Support Initiative, *Days of work: Monday, Wednesday & Thursday*, Youth and Family Service (Logan City) Inc, P: 07 3826 1500 nadinel@yfs.org.au or www.yfs.org.au

Asid 47th Conference 2012

7-9 November, Wellington Town Hall, Wellington, New Zealand, for more information please contact Conference Organisers on 04 562 8259, or info@asid-2012.org.nz



The MHS 14th SUMMER FORUM

REGISTER NOW FOR EARLYBIRD RATE AND SAVE – ONLY 3 DAYS TO GO

23 & 24 February 2012

Aerial UTS Function Centre, Sydney, NSW

CONFRONTING SELF-HARM

From understanding to responding

SPEAKERS

Graham Martin, Katharine Saunders, Patrick McGorry,

Merinda Epstein, Brian Draper, Maggie Mackeller,

Geraldine White, Najeeb Wazefadost, Nick Allen and Michael Dudley

Register Online (Earlybird Deadline 20 Jan 2012)

Conference Program Speakers Information

Accommodation Deadline... Special conference hotel rate is only guaranteed until 25 January

Limited Sponsorship Opportunities still available

The MHS 22nd ANNUAL CONFERENCE

CALL FOR PAPERS

Abstract submissions now being accepted

21 – 24 August 2012

Cairns Convention Centre, QLD

RECOVERING CITIZENSHIP

KEYNOTE SPEAKERS

Mick Gooda (Australia), Rufus May (UK), Roberto Mezzina (Italy)

Abstract Submission Deadline: 8 March 2012

Acceptance Notification: Mid May 2012

More conference information available on The MHS website

2012 Mental Health SERVICE Achievement Awards Applications now open

Closing Date: 5 April 2012

2012 Mental Health MEDIA Achievement Awards Applications now open

Closing Date: 19 April 2012

**The MHS communication details: info@themhs.org; Web: www.themhs.org Read our Blog: Mental Health Connect;
Connect with us on Twitter**



Support Groups

Brisbane Adult

Meets: Woolloongabba

Date: 25 Feb
26 May
26 Aug
24 Nov

Time: 2 – 4pm

Dravet Syndrome

Meets: Woolloongabba

Date: 26 May
25 Aug
24 Nov

Time: 2.00 – 4.00pm

Bribie /Caboolture

Meets: Ningi

Date: 9 Feb
10 May
9 Aug
8 Nov

Time: 10.30 -12.30pm

Gold Coast

Meets: Crestwood Plaza

Date: 25 Jan	29 Feb
28 March	26 April
30 May	27 June
25 July	28 Aug
26 Sept	31 Oct
	28 Nov

Time: 10am

Cairns

Meets: White Rock

Date: Last Saturday of each month,
Starting 26 Feb, 2012

Time: 2 – 4pm

Ketogenic /Atkins Diet

Meets: Woolloongabba

Date: 17 March
Time: 2 – 4pm

Logan

Meets: Logan North Library

Date: 1 March
7 June
13 Sept
6 Dec

Time: 10.00 – 12.00pm

Mackay

Meets: Gordon White Library Mackay

Date: 4th Wednesday of the month,
starting 25 Jan 2012

Time: 6.00 - 8.00pm

Brisbane North-side

Meets: Chermside Library

Date: 20 Jan
20 April
20 July
19 Oct

Time: 10.00 – 12.00pm

Sunshine Coast

Meets: Maroochydore Library

Date: 13 April
13 July
12 Oct

Time: 10.00 – 12.00pm

Toowoomba

Meets: City Hall, Toowoomba

Date: 28 Feb 27 March
24 April 22 May
26 June 24 July
28 Aug 25 Sept
23 Oct 27 Nov

Time: 10.30 – 12.30pm

Redlands

Meets: Capalaba Place

Date: 21 Feb
15 May
7 Aug
30 Oct

Time: 10.00 - 12.00pm

RSVP your attendance at a support
group meeting and for information,
please phone 3435 5000
or email
servicos@epilepsyqueensland.com.au



Are you a story teller??

Share a story on your child in our newsletter!

Tell a story about your child and how they are an inspiration
to your family

Websites for Information on:

- ∞ Community Living Initiative
<http://www.communities.qld.gov.au/disability/support-and-services/our-services/community-living-initiative>
- ∞ My Future My Life
<http://www.communities.qld.gov.au/disability/support-and-services/our-services/my-future-my-life>
- ∞ Supporting Families
<http://www.communities.qld.gov.au/disability/support-and-services/our-services/supporting-families>
- ∞ Aids, Equipment and Assistive Technology Funding
<http://www.communities.qld.gov.au/disability/support-and-services/our-services/aids-equipment-and-assistive-technology-funding>
- ∞ Disabled Patients Mind-Meld With Robots
<http://news.sciencemag.org/sciencenow/2011/09/disabled-patients-mind-meld-with.html?ref=hp>
- ∞ Hair element content in learning disabled children
<http://www.sciencemag.org/content/198/4313/204.abstract?sid=ce8001e5-9272-41e5-999f-a06881odd5fo>
- ∞ Epilepsy
www.epilepsyqueensland.com.au
- ∞ Resource kit for engaging young people with a disability
<http://www.yanq.org.au/resources/3580-a-resource-guide-to-involving-young-people-with-a-disability-in-decision-making>
- ∞ Health Management Resources
<http://www.disability.wa.gov.au/publication/healthmanagement.html>
- ∞ ASID
<http://www.asid.net.au>
- ∞ Disability Support Pension's False Crisis— Article
<http://www.abc.net.au/rampup/articles/2012/01/12/3406656.htm>
- ∞ Clear Thinking Cube
www.clearthinking.com.au
- ∞ Youth Affairs Network—A resource guide to involving young people with a disability in decision making
<http://www.abc.net.au/rampup/articles/2012/01/12/3406656.htm>
- ∞ Survey of Emerging Adulthood Recruitment Information
www.emergingadulthood.org

Epilepsy Queensland



2012 Queensland Epilepsy Symposium Emerging Treatments for Childhood Epilepsy Saturday 2 June 2012



**Do you have a child with epilepsy?
Do you work with children with epilepsy?
Are you a paediatrician? Or health professional?**

Don't miss this opportunity to find out more about the emerging treatments for childhood epilepsies.

You are receiving an advanced invitation to an epilepsy seminar with international, interstate and local experts in the field

Introducing key note speaker Professor Renzo Guerrini—

Renzo Guerrini is a Professor of Child Neurology and Psychiatry at the University of Florence, Florence, Italy. He is also Head and Director of the Paediatric Neurology Unit, University Hospital A. Meyer, Florence. His research focuses on the neurophysiology and neurogenetics of epilepsies. Current work includes early characterization of epileptic syndromes and molecular analysis of genes involved in malformations during cortical development and the molecular genetics and genotype-phenotype correlations of idiopathic epilepsies with genetic origin. Between 2002 and 2006, Renzo Guerrini chaired the International League Against Epilepsy Commission on Paediatrics. In 2003, he received the Ambassador of Epilepsy award from the International League Against Epilepsy. He is Associate Editor of *Epilepsia* and he is acting, or has acted, as a member of the Editorial Board for a number of journals (*BMC Medical Genetics*, *Epilepsies*, *Epileptic Disorders*, *The Journal of Child Neurology*, *Neuropediatrics* and *Seizure*). He has published over 300 peer-reviewed papers and written six books. He has also been an invited speaker at more than 350 meetings worldwide.



Where: Princess Alexandra Hospital
'Russell Strong Auditorium'
199 Ipswich Road, Buranda

Cost: Free for Financial Members and \$50 Non-Members
(includes food and materials)

BOOKINGS ARE ESSENTIAL

Places will be limited. To reserve your seat, please phone 07 3435 5000 or email rsvp@epilepsyqueensland.com.au



Miles Morgan Australia Pty Ltd.

Miles Morgan has recently been engaged by the Career Industry Council of Australia to develop a set of draft guidelines for effective career development services for young people (15-24) with disability.

As part of our research, we are conducting an online survey of stakeholders operating in the disability services and career development sectors. This survey aims to identify common career challenges and barriers faced by young people with disability and to discover effective practices to support their career development.

It's a short survey, which shouldn't take longer than 10 minutes to complete, and is located online at <https://www.surveymonkey.com/s/XBJ592Q> . It will be open until Friday the 6th of January, 2012.

Any feedback we receive will be valuable in assisting us to develop guidelines that provide practical support to service providers working with young people with disability, and will be greatly appreciated.

Should you, or anyone you may be able to forward the survey on to, like more information about the survey or the project in general, please don't hesitate to contact Rob Allen at Miles Morgan (either by phone, on (08) 9228 8089, or by email, robert@milesmorgan.com.au) or Peter Tatham on peter.tatham@cica.org.au at CICA.

**Rob Allen**

Research Associate
Email: robert@milesmorgan.com.au

Miles Morgan Pty Ltd

C2/58 Newcastle St, Perth WA 6000
Telephone: (08) 9228 8089
Facsimile: (08) 9328 9876

www.milesmorgan.com.au

The Best Project is looking for Participants

The Best is a workshop program, a party and a social action to make Brisbane a more accessible city.

Brisbane based company Contact Inc and Toronto based company Mammalian Diving Reflex are collaborating with Brisbane's most interesting under 30's. One of the things that makes this group of young folks unique is their lived experience as people who identify as having a disability. The other things you will just have to wait and see...

Over a 7 week workshop program artists will work with project participants to explore the topics of dating, love, romance, sexuality and intimacy and work together as a group to create a series of things which will happen at a party.

This party is for the general public and we hope will happen in an inner city venue designed for parties. This party is a little utopia, a place where everyone can feel great, enjoy themselves, see some strange, hot, funny, entertaining, intriguing people who have a vision for how every party should be.

Specific details:

- We are looking for more participants to join this project – so if you are under 30, identify as having a disability and are keen to create a party where we share ideas and moments of dating, love, romance, sexuality and intimacy please email Thomas Banks our project guy on Thomas@contact.org.au or ring the office 32553900
- Workshops will start Thursday 16th February
- Party will take place in the last week of March – dates and venue to be confirmed
- For more info about Contact Inc check out www.contact.org.au and info about Mammalian Diving Reflex check out www.mammalian.ca



**mammalian diving
reflex**



TOWARDS A BETTER LIFE

An exploration of the **Social Role Valorisation Framework**
with regard to people who are marginalised



About this workshop

...

This workshop explores why it is that some groups in our society are more likely to experience marginalisation and stigma, and the impact that this has on people with disabilities, aged people and other marginalised people. The workshop also examines how the acquisition of valued roles can contribute to changed societal perceptions and strengthen the likelihood that people with a devalued status will get a better life. The core themes and principles of SRV will be explored through presentations, exercises and discussion.

Who this workshop is for

...

This workshop is designed for participants from a range of sectors (disability, aged care, mental health, youth etc). This will include support workers, coordinators, family members, people with disabilities,

people with a mental illness and older people receiving services.

Those people who are in leadership positions are advised to do the more in-depth and conceptually challenging three day Social Role Valorisation workshop 12-14 June, though this 2-day event could meet your needs.

Of course all participants should be people who are looking for ways of meeting the real needs of marginalised people, resulting in a better life, and who are interested in understanding more about Social Role Valorisation.

About the presenter

...

Jane Sherwin is a Senior Social Role Valorisation Trainer, having been involved in the teaching, learning and application of SRV since the early 1990s. Based as a consultant in Queensland, Jane has been involved in the lives of people with disabilities and older people since the late 1970s, in government and community services as an occupational therapist, manager, lecturer, and organisational change manager.

Juliette McAleer, an LAC from Kingaroy, will co-present and draw on her extensive community experience in the lives of people with disabilities.

When

20 & 21 March, 2012

Where

Riverglenn, Kate St,
Indooroopilly, Brisbane

RSVP

5 March

Registration fee

\$275

Concession \$99

Registration form

See

separate attachment, or
contact viaainc@gmail.com

Any queries?

Rainer Parsons
Workshop Coordinator
mob 0400 101 211

LOOKING TO BE PART OF SRV CONVERSATIONS? HERE'S 3 IDEAS:

1. Come to a Discussion Evening or Breakfast hosted by Values in Action
2. Join the SRV groups on Facebook or LinkedIn
3. Subscribe to the SRV blog
<http://blog.srvip.org/>

RSVP DATE
FOR **THIS WORKSHOP**
5 March 2012

ANOTHER OPPORTUNITY!!
THIS WORKSHOP WILL ALSO BE
HELD ON
25 & 26 July 2012

This SRV workshop is hosted by



SEE OVER PAGE
for more SRV workshops

Population Health Congress 2012

Population Health in a Changing World

Four of Australia's leading health professional organisations working together to strengthen the focus on population health in the region

Adelaide Convention Centre, Adelaide, Australia 10-12 September 2012



Get involved in the biggest population health event of 2012

This major conference will attract about 1300 participants from Australia, New Zealand, the Pacific and beyond, and will feature a range of local and international speakers. This four yearly event will be the largest population health event of 2012, so make sure you don't miss out.

It is jointly run by the Public Health Association of Australia, the Australian Health Promotion Association, the Australasian Epidemiological Association and the Australasian Faculty of Public Health Medicine.

There are four easy ways to be involved.

1. Submit an abstract

See http://www.conferenceco.com.au/PopHealth/Abstract_Information.asp for details. Submit by the 24th February,

2. Submit a proposal for a workshop

Visit the link above. Submit by the 3rd February.

3. Volunteer to review some abstracts

We need 150 reviewers to assess the expected 1000 abstracts. Please assist by downloading the form at <http://www.phaa.net.au/documents/PopulationHealthCongressAbstractReviewerTemplate.xls>

4. Register to attend

Registrations will open soon. Visit <http://www.conferenceco.com.au/PopHealth/Index.html> for up-to-date information.