



Located at
the Mater Hospital,
Potter Building,
Annerley Rd,
South Brisbane
61- 07-31632412
qcidd@uq.edu.au



December 2011

Our aim is to improve the health and wellbeing of adults with a developmental disability in Queensland, through multi-disciplinary research, education and clinical practice.

QCIDD CLINIC UPDATE



Dear QCIDD supporters,

Hello, Summer welcomes us to new things and new ideas.

We have introduced QCIDD Family Supporters Network. This offers family, friends, carers, support workers and anyone else that has an interest and would like to co-present in lectures, participate in a video for production, or just to be involved in research education and development. Those who are interested in supporting QCIDD in new and exciting ways, please see page 8 for more information. QCIDD would love you to participate!

Our waiting time for the clinic is booked up to June 2012 at the moment. However our clinic is still experiencing a high demand for service.

The staff of QCIDD wishes all of our colleagues, friends and supporters the very best of the Festive Season and looks forward to working with you in 2012

In this issue:

- ∞ **Clinic update**
- ∞ **Farewell**
- ∞ **Useful Websites**
- ∞ **Latest Collaborations**
- ∞ **Presentations**
- ∞ **Up Coming events**
- ∞ **Books of interest**

If you have any queries about the QCIDD Clinic please phone us on (07) 3163 2524 or email j.gibson2@uq.edu.au

Merry Christmas
Feliz Navidad
Joyeux Noel
Froehliche Weihnach-
ten
Buone Feste Natalizie
Maligayan Pasko
Nollaid Shona Dhuit

Farewell

It is with sadness that we farewell Dr Jodie Carter, one of QCIDD's Senior Lecturer's and Psychiatrists. Jodie has been with us for a little more than two years and is going to pursue a dream of opening a private practice. We will miss her greatly. From all the team at QCIDD we wish her all the best in private practice.



DID YOU KNOW??

- **Significant changes to the way specialist disability services are delivered came into effect from July 2011.**

The changes are part of the Growing Stronger program of reform to build a better specialist disability service system which provides a fairer and more transparent way for Queenslanders with a disability to access support and specialist services.

Improvements include: -

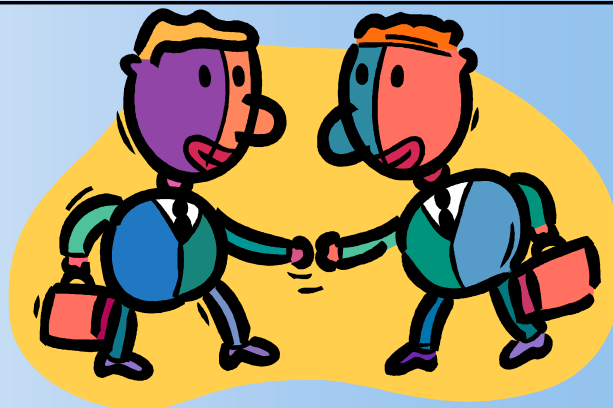
- A new way for prioritising requests for support which are tailored to each person's specific needs a process of review to ensure that the services and support people receive continue to provide the support they need,
- Changes to service provider funding which ensure we are purchasing services that best reflect the needs and goals of the Queenslanders accessing them.

To see more information on this go to:

www.communities.qld.gov.au/disability/key-projects/growing-stronger-investing-in-a-better-disability-service-system

Our Latest Collaborations

- ASID
- QUT
- Endeavour Foundation
- Bachelor Oral Health
- QDN
- Uni Quest
- IDNWG (QLD Health)
- South West Brisbane Disability Network
- Relationship, Sexuality Disability Network
- Centre of excellence for behaviour support
- Ipswich City Council
- Brisbane City Council (Disability Action Plan)
- Growing Strong Forum
- Round table meeting with the Minister
- WWILD
- Open Minds
- QPPD
- FPQ
- Department of Communities SRS Team
- Health Commission QLD
- BOLD
- UQ
- MMRI
- UQ Mater Centre for Primary Health Care Intervention
- AEIOU
- CRU
- Carers QLD
- Workforce Council
- Blue Skies
- Forensic Mental Health (QLD Health)
- PANDDA



Courses / Workshops / Conferences

Family Planning: http://www.fpq.com.au/event_cal.php

SSBP: www.ssbpcconference.com

AADDM: www.aaddm2012.com

Every Australian Counts: everyaustraliancounts.com.au

Professional Association of Nurses in Developmental Disability Australia: www.pandda.net

National Disability Services: <http://www.nds.org.au>

Just Speak Up: <http://justspeakup.com.au/>

Beyond Blue: www.beyondblue.org.au/resources

Up Coming Events

Family and Carer Peer Learning Network

Assisting families to find their way in the complex disability sector Thursday 1st December 2011, 9:15am-1:30pm, email to regisoions@worHorce.org.au , for more information call (07) 3237 1482, Free call number for parents and unpaid carers 1800 851 848

BRING IT ON!

are YOU ready?

NDS NSW ANNUAL STATE CONFERENCE
Hilton – Sydney • 13-14 February 2012

For more information call Katherine McLellan, Email: katherine.mclellan@nds.org.au, Phone: 02 9256 3137, GPO Box 2687, Sydney NSW 2000

Disability Communities of Practice

“Communities of practice are groups of people who share a concern or a passion for something they do and learn how to do it better as they interact regularly” Sessions :16 Feb, 1st Mar, 29th Mar 2012. For more information and registrations email

registrations@workforce.org.au or call 1800 112 585

Post Natal Depression Awareness Week 13-19th November

Up to one in 10 Australian women will experience depression during pregnancy. This increases to one in seven in the year following birth. Anxiety is thought to be even more common. Queensland Health staff across a variety of health settings play a vital role in supporting women and families experiencing depression or anxiety during pregnancy or postnatally.

Living with HIV from a different cultural background

Living with HIV is a challenge, but living with HIV from a different cultural background is more than a challenge. If you want to hear their stories please come to HIV forums that will be held in Brisbane in November and Logan in early December. The forums will feature: 1. updates of new HIV infections in Queensland and Australia 2. personal stories of people who are living with HIV in Queensland 3. panel discussions: service providers & religious leaders

Brisbane forum: Saturday, 26 Nov11, Annerley Baptist Church, 560 Ipswich Road, Annerley

Logan forum: Saturday, 3 Dec11, Woodridge St Paul's School Hall, 3 St Paul Dr (off Jean St)

Spiritus One Stop Shop

Spiritus has opened a one stop shop of social services at Buranda. Their new headquarters bring together a range of services including counselling and education, child protection, homelessness and services for people living with HIV/AIDS. The hub is designed to implement a “no wrong door” policy. If someone enters the service but requires another then that can be provided in a seamless way. If someone comes in and is homeless and needs counselling, that can be provided. If they are homeless and have needs for child protection a variety of services can be wrapped around a family.

Phone 1300 785 853

Relationships & Sexuality Disability Network (RSDN)

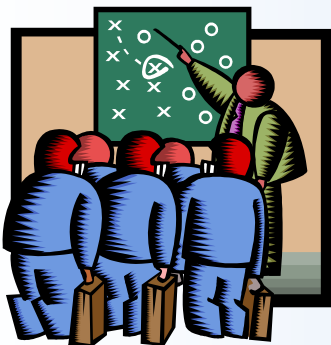
Christmas shopping afternoon, Fortitude Valley, Thursday 1st Dec 2011 from 3:30–4:30, please RSVP to disabilty@fpq.com.au

Pacific Rim International Conference on Disability and Diversity

The deadline for the 2012 Pacific Rim International Conference Call for Proposals is right around the corner! We invite you to share your experience and knowledge with hundreds of people who are passionate and committed to building a world where all can live to their complete potential. Proposals for topical and breakout presentations, workshops, poster sessions, symposia and other formal sessions will be considered for inclusion in the program if submissions are received by December 16, 2011.

Where: Honolulu, HI: Hawai'i Convention Centre When: March 26, 27th 2012

For more information and registration for the Pacific Rim International Conference on Disability and Diversity, special events, workshops, pre- and post-conferences go to <http://www.pacrim.hawaii.edu> or email cccrocke@hawaii.edu.



September to December 2011 Presentations

Prof Nick Lennox

Fragile X syndrome, 14th Society for the Study of Behavioural Phenotypes International Research Forum, Mater Hospital

Impact of developmental disability across the life cycle, Child Psychiatry, Brisbane

Issues affecting people with intellectual disability, Queensland Round Table 2011 Committee, West End

Prof Nick Lennox & Julie Gibson

Child Psychiatry, Child & Youth Mental Health, Spring Hill

Dr Margo Lane

Medical students as health advocates for adults with Intellectual Disability in an annual comprehensive health review process, School of Medicine Teaching & Learning Conference, Herston

Miriam Taylor

Human Movements, Relationships and friendships, St Lucia

Disability and sexuality, Sexuality and Health: Ensuring Satisfaction, Safety and Significance for All, School of Medicine UQ St Lucia & UQ Ipswich

QCIDD, Office of the Adult Guardian, Ipswich

Intimacy and sexuality, Breakfast Club of State wide Child and Family Psychologists, Greenslopes

Intimacy and sexuality II, Disability Services Social Workers State wide meeting, New Farm

The work of QCIDD & sexuality issues, Office of the Adult Guardian, Brisbane central

Miriam Taylor & Claire Mitchell

People with intellectual disability and social health determinants, Working with Disadvantaged Patients MBBS, UQCCR



Are you a story teller??

Share a story on your child in our newsletter!

Tell a story about your child and how they are an inspiration
to your family

Websites for Information on:

∞ Community Living Initiative

<http://www.communities.qld.gov.au/disability/support-and-services/our-services/community-living-initiative>

∞ My Future My Life

<http://www.communities.qld.gov.au/disability/support-and-services/our-services/my-future-my-life>

∞ Supporting Families

<http://www.communities.qld.gov.au/disability/support-and-services/our-services/supporting-families>

∞ Aids, Equipment and Assistive Technology Funding

<http://www.communities.qld.gov.au/disability/support-and-services/our-services/aids-equipment-and-assistive-technology-funding>

∞ Disabled Patients Mind-Meld With Robots

<http://news.sciencemag.org/sciencenow/2011/09/disabled-patients-mind-meld-with.html?ref=hp>

∞ Hair element content in learning disabled children

<http://www.sciencemag.org/content/198/4313/204.abstract?sid=ce8001e5-9272-41e5-999f-a068810dd5f0>

∞ Epliepsy

www.epilepsyqueensland.com.au

BOOKS OF INTEREST

Advanced dental disease in people with severe mental illness: systematic review and meta-analysis.

Steve Kisely, Lake-Hui Quek, Joanne Pais, Ratilal Laloo, Newell W. Johnson and David Lawrence *BJP* 2011, 199:187-193. To obtain reprints or permission to reproduce material from this paper, please write to permissions@rcpsych.ac.uk.



Just a reminder folks, March 2012 is in the very near future!

AADDM2012
Australian Association of Developmental Disability Medicine

March 8-10, 2012
Sydney, Australia



The Australian Association of Developmental Disability Medicine (AADDM) is pleased to announce that it will hold its 2012 Conference at the Scientia Centre, University of New South Wales in Sydney, Australia on March 8-10, 2012. The AADDM2012 conference will be an *“ideal learning opportunity for medical practitioners, policy makers, academics and government,”* according to conference convenor Associate Professor Julian Trollor. Key themes for the AADDM2012 conference are **Mental Health, Physical Health Across the Life Span and Health Services Development.**

International keynote speakers include **Professor Eric Emerson** (Lancaster University) and **Professor Tony Holland** (University of Cambridge) while national keynote speakers include **Professor Louise Baur** (University of Sydney), **Dr David Mowat** (Sydney Children's Hospital/ University of New South Wales), **Ms Maria Heaton** (NSW Council for Intellectual Disability) and **Professor Greg O'Brien** (Disability Queensland/Northumbria University).

The deadline for submissions is now closed, for the submissions for Symposia, Free Papers and Posters. Early bird registration closes on December 14, 2011. For more information please go to www.aaddm2012.com or contact us at aaddm@unsw.edu.au.

Please send via email or fax your registration renewal forms to j.curtis1@uq.edu.au along with confirmation of payment.

Family supporters of QCIDD



We are always grateful for your support and want to wish you a Happy and Peaceful Christmas and a wonderful entry to 2012.

We are looking for ways to involve more families in QCIDD in the New Year.

If you are interested in any of these ways to be involved with QCIDD, please just email our Jenny Curtis at j.curtis1@uq.edu.au or call Jenny on 07-31632412.

- ☐ I would like to be involved in lobbying activities such as visiting your local member of parliament about health funding for people with intellectual disability
- ☐ I am happy to be involved in consultations with QCIDD about future direction
- ☐ I would like to be a co-presenter in lectures for undergraduate students (Medicine, Human Movements, Social Work, Therapies, Oral Health, Psychiatry) or community presentations
- ☐ I would like to be an actor in video productions
- ☐ I would like to help with educational resource development

Thanks again and Happy New Year!



Paper Bag

Do People with Intellectual Disabilities experience grief and Loss: Seminar and Discussion on Individual worker and service responses in supporting people with intellectual disability and their support workers experiencing grief and loss issues.

Thursday, December 8th, 2011 - 11:00 am to 1:00 pm

People with intellectual disability are more likely to have experienced grief and loss issues within their life than people without disabilities. The lived experience of a person with disability is such that they are more vulnerable to this experience of loss and trauma than others in the community. This discussion will address how services should respond to issues of grief and loss from an individual support worker or case manager perspective and from an overall service perspective. Guest Speakers for this event are:

- ∞ **Jill Oliver** - Jill currently works as the Counsellor-Group worker at WWILD in the Sexual Violence Prevention Service. The focus of her work is enhancing the lives of women with an Intellectual disability by building strengths to decrease their vulnerability and/or dealing with the effects of trauma and sexual assault in their lives. Supporting clients through grief and loss issues are a considerable part of the work. Jill takes a wide approach that covers Psychology, Narrative Therapy and the creative therapies like Sandtray and Art Therapy. Jill has previously worked with clients that include trauma victims in central Africa, victims of sexual assault in Canberra and in remote rural and indigenous communities in North-west Queensland.
- ∞ **Mark Reimers** – Mark has an extensive background in supporting people living with a disability, and their families. He has had considerable experience in supporting clients through grief and loss. He has held senior leadership and management roles in government and Not-for-Profit organisations. Roles have included direct support, management, staff training, advocacy, consultancy, research and organisational development. Mark has also worked voluntarily as a board member and chairperson of community organisations.



SPONSORED BY WWILD SVP ASSOCIATION INC. & COMMUNITY LIVING ASSOCIATION INC.

HELD AT: AT WWILD, 211 HUDSON RD, WOOLLOOWIN, BRISBANE. CONTACT PERSON – VICTORIA TUCKER. PH- 07-32629877; EMAIL – INFO@WWILD.ORG. LUNCH PROVIDED. COST: \$20. PLEASE RSVP. SEE ATTACHED REGISTRATION FORM FOR DETAILS.

Blair Disability Links



Blair Disability Links is an Expo, featuring disability support services from all over the region.

This is for anyone living with disability, carers, families, in fact anyone who wants to know what is on offer.

Friday 2nd December, 9:00am - 2:00pm.

Brassall Shopping Centre.

For more information call 3201 5300.

CONTACT ME

OFFICE Shop 28-29, Brassall Shopping Centre
68 Hunter Street, Brassall 4305

CALL 3201 5300

EMAIL shayne.neumann.mp@aph.gov.au

VISIT www.shayneneumann.com.au

Authorised by Shayne Neumann MP, Brassall Shopping Centre, Hunter St Brassall QLD 4305